

Performance Data

- Adoption scorecard
- Virtual School for Children in Care
Exam outcomes from Summer 2012
- Children's Safeguarding dataset – *To follow*
LAC numbers/placements etc.

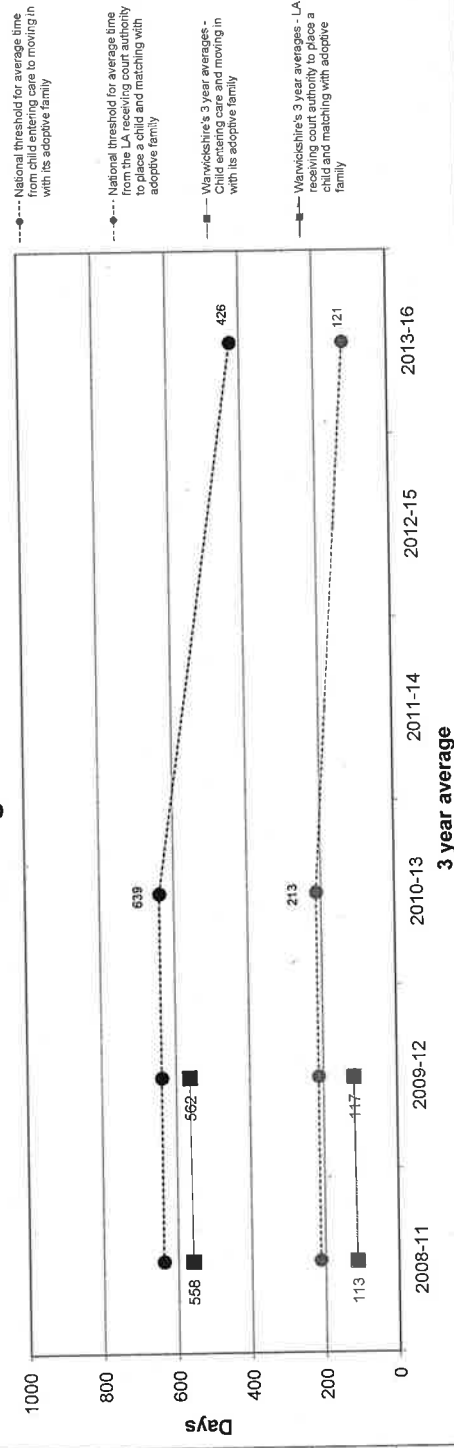
Adoption Scorecard

Warwickshire

Children

	Average time between a child entering care and moving in with its adoptive family, for children who have been adopted (days)	Average time between a local authority receiving court authority to place a child and the local authority deciding on a match to an adoptive family (days)	Children who wait less than 21 months between entering care and moving in with their adoptive family (number and %)
LA's 3 year average (2009-12)	562	117	90 (65%)
Trend - Improvement from 2011 to 2012	Average time in 2012 was longer	Average time in 2012 was longer	N/A
England 3 year average (2009-12)	636	195	10,180 (56%)
Distance from 2010-13 performance threshold	Threshold met	Threshold met	N/A

Average Time Indicators



Related Information

Adoptions from care (number adopted and % leaving care who are adopted)	Number and % of children for whom the permanence decision has changed away from adoption	Average time between a child entering care and moving in with its adoptive family. Where times for children who are adopted by their foster family are stopped at the date the child moved in with the foster family (days)	Adoptions of children from ethnic minority backgrounds (number adopted and % of BME children leaving care who are adopted)	Adoptions of children aged five or over (number adopted and % of children aged 5 or over leaving care who are adopted)	Average length of care proceedings locally (weeks)	Number of children awaiting adoption (as at 31 March 2012)	Number of approved prospective adopters (as at 31 March 2012)
85 (11%)	5 (4%)	512	x (x%)	25 (5%)	57	30	Data not available
9,740 (12%)	1,360 (7%)	546	1,490 (6%)	2,520 (4%)	53	5,750	Data not available

Prospective Adopters

Indicators to be agreed	Indicators to be agreed	Indicators to be agreed
Data not available until 2013		

Virtual School for Children in Care

Exam outcomes Summer 2012 as of 5th September 2012

Results to be verified

Profile of year 11 cohort 2011 – 12 supported by the Virtual School

The year 11 cohort, supported by the Virtual School in 2011 – 12 was 87, 74 of whom were students in the care of Warwickshire.

Of the 74 in the care of Warwickshire

- 21 had statements of special educational need and a further 26 were on the special needs register at school – 54%
- 16 students were unaccompanied asylum seekers
- 51 students came into the care of Warwickshire continuously prior to 31st March 2011
- 6 students came into care between April and August 2011
- 9 students came into care between September and December 2011
- 7 students came into care after January 1st 2012

	No of students	into care before 31/03/11	Into care between 1/4/11 and 31/8/11	into care between 1/9/11 and 31/12/11	into care after 1/1/12	UAS	SEN statements	on SEN register
Warks students in Warks schools	48	33	4	7	4	9	13	18
Warks students out of area (OOA)	26	18	2	2	2	7	8	8
Other LAC educated in Warks schools(OLA)	13	na	na	na	na	na	na	na
Total	87							

GCSE or equivalent outcomes for year 11 cohort as described above

	5 A*-C inc E/M	5A*-C	5A*-G	1A*-C	1 A*-G	any qual
Warks students in Warks Schools	9	17	28	30	36	42
Warks students OOA	0	5	14	12	15	18
OLA	3	6	6	9	8	9
Total of 87	12	28	48	51	59	69
%	14	32	55	59	68	79

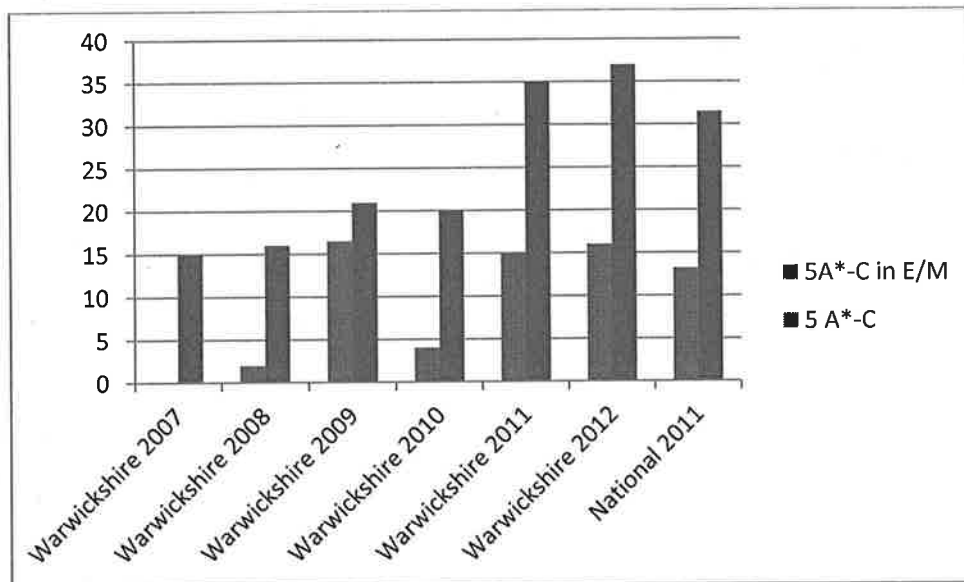
Outcomes for the statistical cohort (used to measure performance nationally)

This is the cohort of students who have been in continuous care for 12 months or more on the 31st March 2012 . This is the cohort used to measure outcomes nationally.

- 33 students were educated in Warwickshire schools
- 18 were educated out of area
- 15 students had statements of special educational need (29%) and a further 18 were on the special needs register in schools (35%) – 65 % identified as having a special educational needs by schools
- 12 students were unaccompanied asylum seekers (UAS)
- There were 6 students who did not achieve any external qualification – 3 were unaccompanied asylum seekers, placed out of year, 2 were in alternative provision and one students had significant learning difficulties and therefore qualifications were not appropriate at this time

Statistical group of 51	SEN statements	SEN register	UAS	5A*-C inc E/M	5 A*-C	5A*-G	1A*_C	1A*-G	any qual.
Warks students in Warks school	9	14	7	8	14	19	21	25	30
Warwickshire students OOA	6	4	5	0	5	12	10	13	15
Total	15	18	12	8	19	31	31	38	45
% of 51	29	35	23	16	37	61	61	74	88

GCSE attainment 2012 compared with previous years



- These results will need to be verified but are based on information received by schools by 5th September 2012.

Year 6 results 2012

42 in cohort

8 from other authorities

Of the 34 Warwickshire pupils:

11 (32%) have statements of special educational needs

A further 4 are on school action plus

Attainment

Level 4+ English 68%

Level 4 + maths 62%

Level 4 English and Maths 62%

Statistical cohort is 27 (those continuously in care for one year prior to 1st April 2012)

9 have statements of special educational need

A further 4 are on school action plus

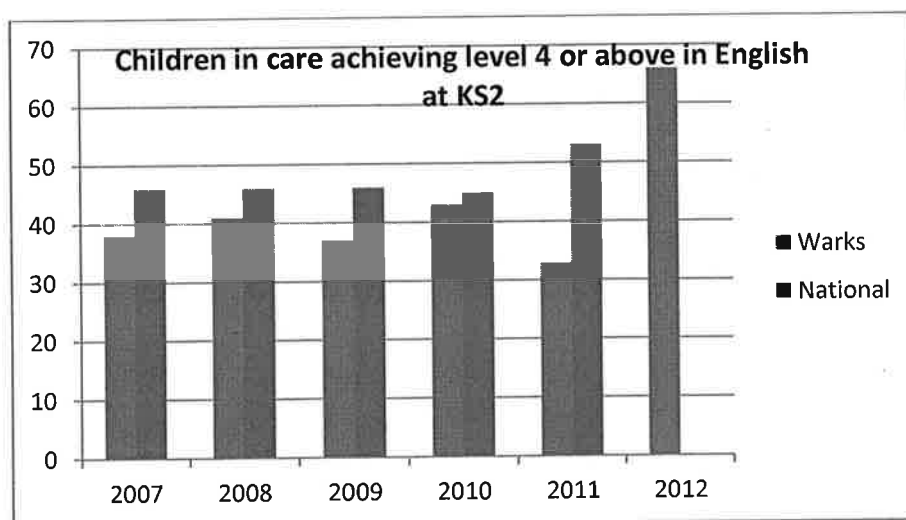
Attainment

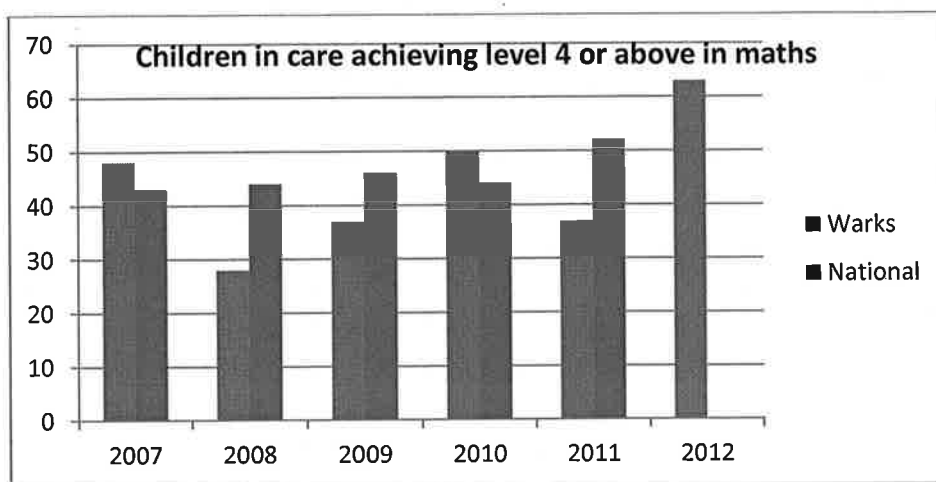
Level 4+ English 66%

Level 4+ maths 63%

Level 4+ English and maths 63%

Note Those pupils who did not achieve level 4 or above in English or did not achieve level 4 in mathematics, were all either statemented or were on SEN register.





Anne Hawker

18 September 2012